



Wakefield Parent Carer Forum

The Official Newsletter



Welcome! to the 9th edition of our newsletter...

in this edition we have details of our full day SEND event "Let's Talk About SEND" plus details of our new drop in sessions. Make sure to keep checking our website & Facebook Chat Group for the very latest information and what's on when, including details on how to book yourself a place.

We hope to see you at one of our events soon,
Alexis, Janine, Heather, Lianne and Kerry x

SEND SOFT PLAY

New dates for our next
SEND Soft Play Session
EXCLUSIVELY for our
members, at A1
Football Factory in
Pontefract.

Tuesday JUNE 21st
&

Tuesday JUNE 28th
4.30pm - 6.30am

£5 per child
Inc Hot Meal & Drink

If you would like to
book a place for your
child please email
[info@wakefieldparent
carers.co.uk](mailto:info@wakefieldparentcarers.co.uk)



LET'S TALK ABOUT SEND

We are hosting a day
talking about SEND
within Wakefield.

Introducing services
you can access,
explaining what things
mean & giving you the
chance to listen to and
speak with
professionals from
across the district.

See inside for further
details including how
to book your place.



Coffee & Chat

Join us Wednesdays 10.30am



At our unit -
Unit 2, Airedale Business Centre,
Kershaw Avenue, Castleford
WF10 3ES



Wakefield Parent Carer Forum

Who we are

Wakefield Parent Carer Forum is an independent parent led forum who work with families of children with special educational needs and/or disability, aged 0-25 years old, living in the Wakefield area.

The forum is led by a group of local parents who are looking forward to listening to, and representing the views of parents, young people and children in the future.

These parents all have a wide experience of what it is like to be a parent of a child with an additional need or disability in the Wakefield area.

We want to work together with you to make a positive difference and improve the quality of life for all children and families in Wakefield.

What we can offer

Reduce isolation for families

Support services to enable families to cope better with the challenges resulting from interaction with various services

Peer support for all SEND families in the Wakefield Area

Support completing EHCP applications & other SEND paperwork

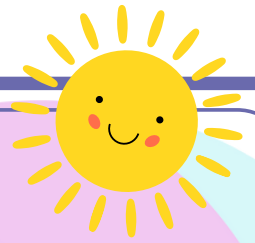
Provision of family activities, sibling support groups

Working with other services in the Wakefield area to make a positive impact for SEND families (LA, CCG, WESAIL, KIDS & local support groups)



info@wakefieldparentcarers.co.uk

LET'S TALK ABOUT SEND



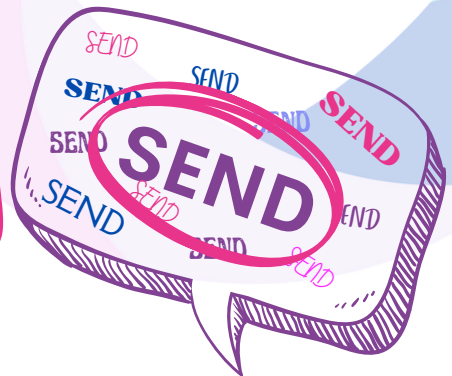
**DATE FOR YOUR
DIARY!**



**Wednesday 22nd June 2022
9am - 2.45pm
King's Croft Hotel,
Pontefract**

**Join us for a day of discussion,
networking, and finding out
about SEND within Wakefield.**

**We have guest speakers from
Wakefield Council, WISENDSS,
Educational Psychology,
SENART, Transport, Preparing
For Adulthood, Health &
Education.**



**We will be hosting workshops in the afternoon discussing the latest
SEND Green Paper & what that means for your child with SEND, & how
you can have your say about the proposed changes.**



AND

Emotionally Based School Avoidance (EBSA)

**What is it? How do you recognise it in your child? Ways to avoid it, & How
to work with school to overcome it.**

**This promises to be a great day packed with lots of valuable information
for parent/carers on a range of SEND related issues.**

Lunch will also be provided.

**Booking is essential if you would like to attend this event,
please email events@wakefieldparentcarers.co.uk
to book your place.**

SEND GREEN PAPER

Don't miss your chance
to have your say!



CLOSING DATE
EXTENDED TO
22ND JULY 2022

In our last newsletter we told you about the Governments Green Paper. We are pleased to confirm that the closing date for having your say has been extended to 22nd July 2022.

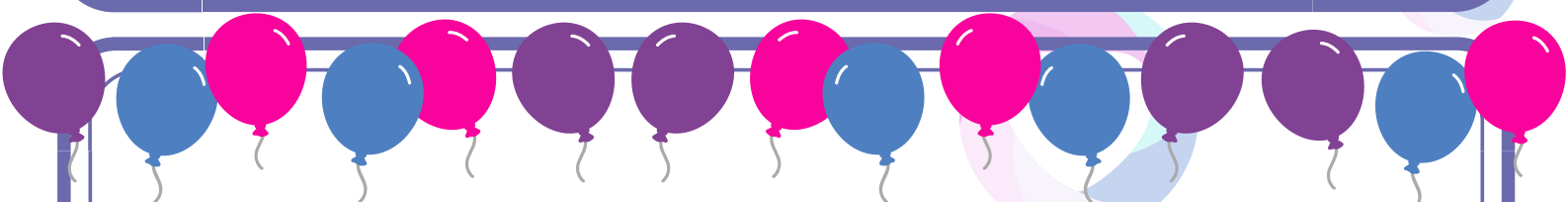
We will be looking into the Green Paper, and the proposed changes at our Let's Talk About SEND event in June. Make sure you book yourself a place to learn more about what it means to you and your child.

Here is a recap of what the Green Paper is
& how you can have your say ...

The Government has recently published its long awaited SEND review in the form of a Green Paper that sets out proposals for changes to the way the SEND system works. Education ministers have emphasised that these are still just proposals, not definite decisions yet & there will now be a period of public consultation lasting until 22nd July 2022.

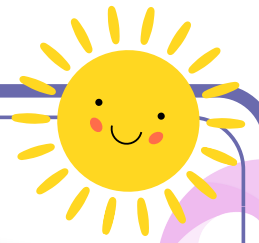
This is your chance to tell the Department for Education what you think, so we hope that many parent/carers of children and young people with SEND, and young people themselves, will share their thoughts and experiences using the link below -

<https://consult.education.gov.uk/send-review-division/send-review-2022/>



Thank you to everyone who came to celebrate our 2nd Birthday with us at The Hut. We had a great day with the inflatable obstacle course, disco dome & children's entertainer.
We hope you enjoyed party bags.

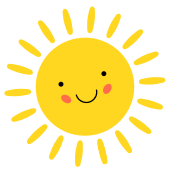
REMINDERS



LENDING LIBRARY

Don't forget we have our Lending Library available to all forum members, with some of the highest rated books within the SEND community. For just £1 per book you can borrow for up to 4 weeks, & we use the money to buy new books for our library.

We have books covering a wide range of SEND topics including PDA, Anxiety, Challenging Behaviour, Autism, Speech & Language & lots more.



Why not arrange to come and take a look at what we have available & if you decide to borrow a book, pay just £1 for up to a month.



SEND SOFT PLAY MEMBER EXCLUSIVE!

What's included - Entry to the soft play with 2 hours exclusive use for our members, A Hot Meal for each paying child (Chicken Nuggets, Hot Dogs & Chips), A Dilute Juice Drink, 20% Cafe Discount for adults.

More about the sessions - Booking is essential as places are limited.

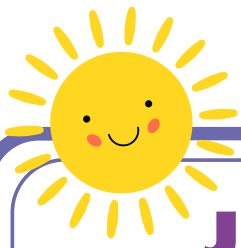
To book, please email info@wakefieldparentcarers.co.uk telling us how many places you need.

When - Selected Tuesday Afternoons

Time - 4.30pm to 6.30pm

Where - A1 Football Factory, Pontefract WF8 1HG

Cost - £5 per child



BREAKFAST CLUB

JOIN US FOR BREAKFAST

Are you feeling lonely,
isolated, getting bogged
down with your day to day
responsibilities?

Then why not join us for
a free breakfast with
other SEND parents.

Take a couple of hours for
yourself & benefit from some
adult company with other
parent/carers who
understand what life is like
for you.

Email us to book
your place -

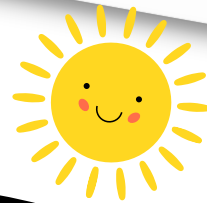
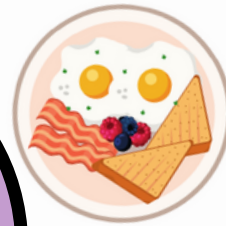


info@wakefieldparentcarers.co.uk

**Tuesday 14th June
@ Birchwood Farm,
Castleford
WF10 4TS**

**Thursday 14th July @
Toby Carvery,
Wakefield
WF2 7AW**

Breakfast Club



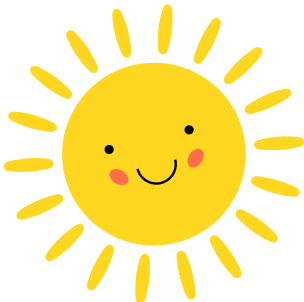
YOU SAID WE DID

DROP IN SESSIONS

As part of our regular forum work, we frequently ask our parent/carers if they have any concerns & how they would like us to help. From these discussions we are then able to plan the events/activities that we host so that parent/carers get the support or answers they really need.

YOU SAID

"We have questions we would like to ask professionals that we don't get chance to ask in our normal appointments"



The first of these sessions was with our guest Educational Psychologist, where parent/carers were able to discuss concerns & ask questions they had relating to their child.



We have set up regular drop in sessions with guest professionals to answer your questions

Following members feedback & the success of this session we have set up further sessions with guests from Wakefield Council's SENART - the team responsible for managing EHCP's within Wakefield. They will be at our Coffee & Chat sessions on the following dates.

**8th June 2022 & 13th July 10.30am - 12.30pm
at our unit in Castleford**

If you would like to join us please email info@wakefieldparentcarers.co.uk to book a place. Places are limited for this event.

FOETAL ALCOHOL SPECTRUM DISORDER (FASD)

Q

How many unit's of alcohol are safe to drink during pregnancy?

None

A

A diagnosis of FASD often has a stigma attached to it that could be seen as a reflection of the birth mother's lifestyle during pregnancy. But what about those pregnancies which go undetected for some time, where mum has enjoyed a glass or two of wine with dinner? Or that night out drinking before you knew you were pregnant?

If you drink alcohol during pregnancy you risk causing harm to your baby. Sometimes this can result in mental and physical problems in the baby, called foetal alcohol spectrum disorder (FASD). FASD can happen when alcohol in the mother's blood passes to her baby through the placenta. Your baby cannot process alcohol well, which means it can stay in their body for a long time. Alcohol can damage their brain and body and stop them from developing normally in the womb. Sadly this can result in the loss of the pregnancy, and babies who do survive may be left with lifelong problems.



SPOTLIGHT ON CONTINUED ...

FOETAL ALCOHOL SPECTRUM DISORDER (FASD)

Although no two children with FASD are exactly alike, FASD can cause problems with -



movement, balance, vision & hearing,
learning - such as problems with thinking, concentration, & memory,
managing emotions & developing social skills,
hyperactivity & impulse control,
communication - such as problems with speech,
joints, muscles, bones, & organs - such as the kidneys & heart.

These problems are permanent, though early support can help limit their impact on a child's life.

Often the condition goes undiagnosed or is diagnosed for example as autism or ADHD rather than those conditions being recognised as comorbid presentations of FASD.

What to do if you think your child has FASD

Speak to a GP or health visitor if you have any concerns about your child's development or think they could have FASD.



FOETAL ALCOHOL SPECTRUM DISORDER (FASD)



How to prevent Foetal Alcohol Spectrum Disorder

FASD is completely avoidable if you do not drink alcohol when trying to get pregnant and while you are pregnant. The risk of FASD is higher the more you drink. There's no proven "safe" level of alcohol in pregnancy. Not drinking at all is the safest approach. If you are pregnant and struggling with an alcohol problem, talk to a midwife or doctor.

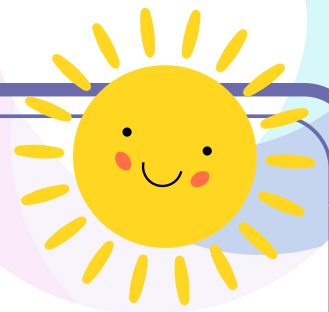
Wakefield Parent Carer Forum are pleased to support the FASD Network UK to increase awareness and understanding of FASD in order to develop the appropriate prevention, diagnostic & intervention services, which will create brighter futures for all who are affected by FASD in the UK.

To learn more about FASD we recommend you take a look at the FASD Network UK website below.

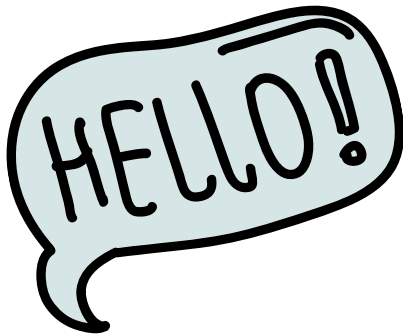
They offer regular support groups, training, and advice on FASD. We have attended these meetings ourselves, and found valuable information & support available



www.fasdnetwork.org



INTRODUCING AMY...



Some of you may know that there is a new interim manager in the SENART team.
Let's introduce you to Amy...

Hi, I'm Amy Benson, I am currently the interim manager for SENART and will be in the role until the end of August. I am joining the team after spending the last 10 years working as a teacher and SENCO within mainstream and specialist settings. I have spent the last three years working as the Teacher in Charge of Newlands Communication Resource.

COMPETITION TIME



THE QUEEN'S PLATINUM JUBILEE

To celebrate The Queen's Platinum Jubilee we are holding a drawing competition.

Send us a photo of your Jubilee themed drawing or painting & we will choose a lucky winner to win a prize!

Email your drawings to competitions@wakefieldparentcarers.co.uk and we will announce the winner in the next newsletter.

Good Luck!



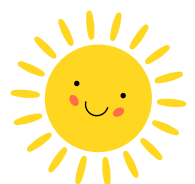
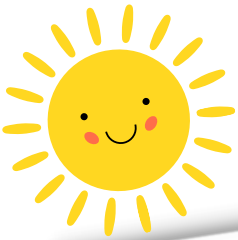
TOP TIPS

TOP TIPS FOR TRANSITION

As we are nearing the end of this school year you will hopefully have started with your child's transition plan for moving to their new school, or even just for moving into the next year group.

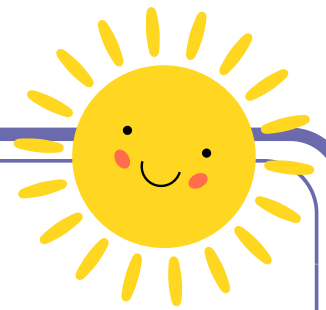
It is really important to get the transition to a new school/setting or year group right, to reduce the anxiety your child may be feeling about the changes.

Take a look at the range of Top Tips Sheets for parent/carers & professionals available on our website using the link at the bottom of this page.



www.wakefieldparentcarers.co.uk/top-tips-sheets

YOU SAID WE DID



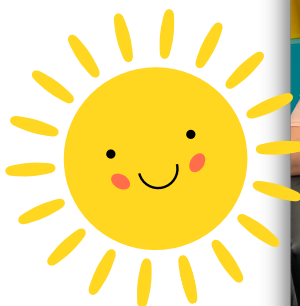
MAKATON TRAINING

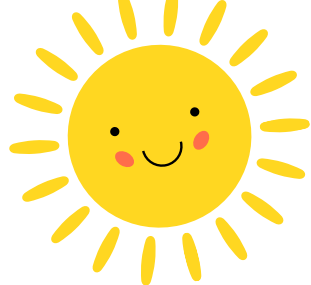
We regularly ask for feedback from our members to make sure that we are delivering what parent/carers within Wakefield need. One of the requests we were hearing from you was a need for some Makaton training to help with your communication with your children at home.

We are pleased to have been able to offer Level 1 Makaton training to some of our members. The course was fully booked very quickly, so we now have a second Level 1 Makaton course starting in June to meet demand for places.

The feedback from those parent/carers who have taken part in our first course has been fantastic, and we are pleased to say that they passed the course so now hold a Level 1 Certificate in Makaton.

The course was so well received that we are looking to offer a Level 2 Makaton course this autumn.





USEFUL CONTACTS



WAKEFIELD PARENT CARER FORUM

Unit 2, Airedale Business Centre,
Kershaw Avenue, Castleford WF10 3ES
info@wakefieldparentcarers.co.uk
www.wakefieldparentcarers.co.uk

CAMHS SPA 01977 735865
CAMHS AIREDALE 01977 735900

CONTINENCE TEAM
01924 541009
01977 747066

SENART

01924 302465
senart@wakefield.gov.uk
SENART, Block C, Normanton Town Hall,
High Street, Normanton WF6 2DZ

PONTEFRACT OCCUPATIONAL THERAPY

Pontefract - 01977 747180
Pinderfields - 01924 541411

WESAIL - FAMILY ACTION

01924 965588
wesail@family-action.org.uk

TRANSPORT TEAM

hst@wakefield.gov.uk

LOCAL OFFER

wakefield.mylocaloffer.org

EDUCATION, INCLUSION & ASSESSMENT SERVICE

eps@wakefield.gov.uk
01924 307403

INFORMATION NETWORK

wakefield.mylocaloffer.org/information-network

SOCIAL CARE DIRECT

01924 303458

CARERS WAKEFIELD

01924 305544

SCHOOL NURSING TEAM

01924 310130

PORTAGE

01924 307403
eps@wakefield.gov.uk

IPSEA

01799 582030
office@ipsea.net

WISENDSS

WISENDSS@wakefield.gov.uk

PINDERFIELDS & PONTEFRACT CHILDRENS CENTRE

01924 541009 and 01924 541982

